

HIGHLIGHTS (Percentages refer to year-on-year variations unless otherwise specified)

The BDL coincident indicator stood at 244.8 in August 2013, compared with 248.7 in the previous month and 230.0 in August 2012. The balance of payments registered during the month a deficit equivalent to USD 223 million. Year-on-year, the consolidated balance sheet of commercial banks rose by 7.8% and the deposit dollarization rate stood at 65.7% at end-August. Bank interest rates increased on both USD and LBP debit and credit accounts.

- ☒ The **balance of payments** posted a deficit equivalent to USD 223 million in August 2013. This was reflected in a drop in the net foreign assets of Banque du Liban by an amount of USD 298.8 million, and an increase in those of banks and financial institutions by USD 75.8 million. In the year to August, the BOP registered a cumulative deficit of USD 1,180.2 million, compared with a cumulative deficit of USD 1,839.5 million in the same period of 2012.
- ☒ According to figures released by the Ministry of Finance, net total **public debt** increased in August 2013 by LBP 887 billion, totaling LBP 77,979 billion at the end of the month. This increase stems from a rise in both the foreign-currency-denominated public debt and the LBP-denominated net public debt, as the former increased by an amount of USD 69 million, to USD 26,243 million, and the latter by LBP 784 billion, to LBP 38,418 billion at end-August. Year-on-year, the net total public debt, the LBP-denominated debt and the foreign-currency-denominated debt grew by 8.1%, 3.1%, and 13.5% respectively.
- ☒ **Gross foreign-currency reserves of Banque du Liban** attained USD 37,242.1 million at end-August 2013, increasing annually by USD 888.1 million or 2.4%. Total foreign assets, including gold, totaled USD 50,124.8 million. The average **US dollar exchange rate** remained stable on the domestic market, standing at LBP 1,507.50.
- ☒ **Interest rates** remained unchanged in August 2013 on all categories of Treasury bills and bonds. Accordingly, at the end of the month, yields stood at: 4.44% on the three-month, 4.99% on the six-month, 5.35% on the one-year, 5.84% on the two-year, and 6.50% on the three-year. On the Lebanese pound, bank interest rates on debit and credit accounts went up by 11 and 4 basis points respectively, reaching 7.24% and 5.47%. These rates increased also on both USD debit and credit accounts. Accordingly, the USD weighted average lending rate reached 7.16% in August (+14 basis points), and the USD average deposit rate was up to 2.91% (+2 basis points).
- ☒ The **monetary aggregate M3** reached LBP 163,226.5 billion at end-August, increasing annually by 7.1%. Bank credits to the private sector remained the main factor in money creation. Regarding money stock components, LBP-denominated deposits and foreign-currency deposits registered a growth of 6.2% and 7.4% respectively.
- ☒ The **consolidated balance sheet of commercial banks** reached LBP 239,034 billion at end-August 2013, with an annual rise of 7.8%, compared with 8.5% in July 2013. Resident and non-resident private sector deposits, as well as credits to the private sector, improved by 8.4% and 9.2% respectively. The **dollarization rate** of bank deposits stood at 65.7% at end-August.
- ☒ **Trade deficit** deepened by 7.3% and totaled USD 1,548.4 million at end-August 2013. In value, exports regressed by 17.6%, standing at USD 279.4 million, while imports progressed by 2.6%, reaching USD 1,827.8 million.
- ☒ Compared to August 2012, the volume of **cement deliveries**, indicator of the construction sector's current activity, expanded by 36.9%, while the area of **construction permits**, indicator of its potential activity, shrank by 0.4%.
- ☒ **Power production** increased by 27.7%, to 1,146.2 million kWh during the month.
- ☒ At **Beirut International Airport**, total plane traffic and passenger flow rose by 4.1% and 15.8% respectively. The number of incoming and outgoing passengers improved by 21.2% and 12.1% respectively, while that of transiting passengers fell by 69.0%. Airfreight widened by 9.5%.
- ☒ In August 2013, the number of ships and the volume of maritime freight at the **Port of Beirut** narrowed by 11.1% and 0.3% respectively.

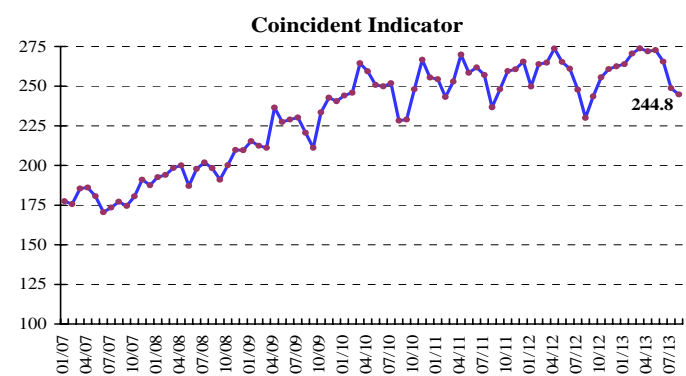
DIAGNOSIS

THE BDL COINCIDENT INDICATOR

The BDL coincident indicator stood at 244.8 in August 2013, compared with 248.7 in the previous month and 230.0 in August 2012, registering an annual increase of 6.4%.

Coincident Indicator (Average 1993=100)

	Index	Monthly Changes (%)	Annual Changes (%)
Aug-2012	230.0	-7.2	-2.8
Sep-2012	243.5	5.9	-1.9
Oct-2012	255.6	5.0	-1.5
Nov-2012	260.8	2.0	0.1
Dec-2012	262.5	0.7	-1.1
Jan-2013	263.9	0.5	5.6
Feb-2013	270.6	2.5	2.5
Mar-2013	273.9	1.2	3.4
Apr-2013	272.0	-0.7	-0.6
May-2013	272.7	0.3	2.8
June-2013	265.5	-2.6	1.7
July-2013	248.7	-6.3	0.4
Aug-2013	244.8	-1.6	6.4



CLEARING HOUSE ACTIVITY

In August 2013, the total value of cleared checks decreased slightly by 0.7%. The value of checks in Lebanese pound went up by 9.8%, while that of checks in foreign currencies went down by 3.5%. From the total of cleared checks, the share of foreign-currency-denominated checks stood at 76.8%, declining by 2.8%. Year-on-year, the share of returned checks grew by 10.4%, accounting for 2.2% of the total value of checks at end-August 2013.

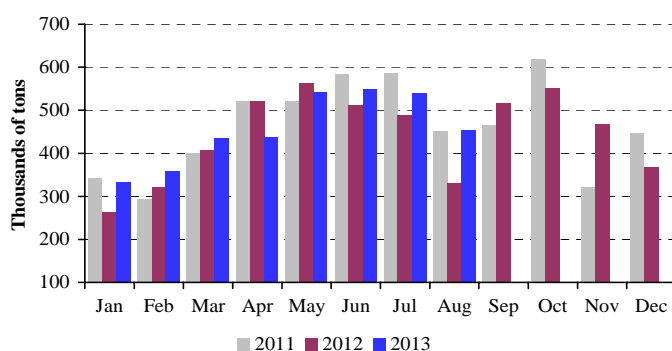
REAL SECTOR

CONSTRUCTION AND REAL ESTATE

Compared to August 2012, the volume of cement deliveries, indicator of the construction sector's current

activity, expanded by 36.9%, while the area of construction permits, indicator of its potential activity, shrank slightly by 0.4%.

Cement Deliveries



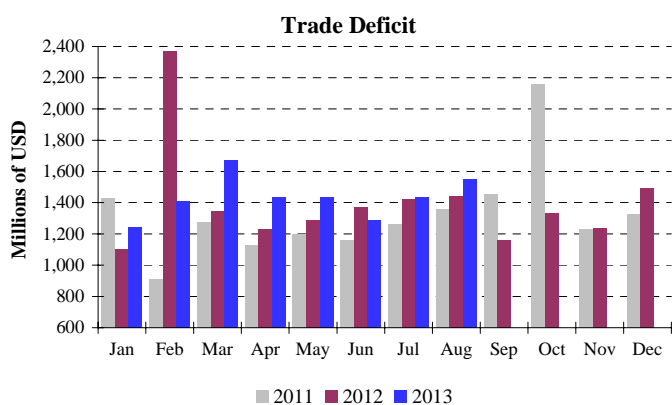
Source: Cement companies

Year-on-year, real estate fees collected during the month increased by 10.1%, reaching LBP 70.4 billion.

FOREIGN TRADE

Trade deficit deepened by 7.3% and totaled USD 1,548.4 million at end-August 2013. In value, exports regressed by 17.6%, standing at USD 279.4 million, while imports progressed by 2.6%, reaching USD 1,827.8 million.

Customs duties collected during the month rose by 3.6%, to LBP 195.6 billion.



Source: Customs Higher Council

In the year to August 2013, import shares from major source countries were as follows: China 9.8%, Italy 8.3%, United States 7.4%, France 7.3%, and Turkey 6.1%. In August 2013, these shares were as follows:

Imports by Origin (millions USD)

	Aug 12	% of total	Aug 13	% of total
China	150.1	8.4	264.4	14.5
Turkey	80.8	4.5	197.0	10.8
Italy	179.3	10.1	172.8	9.5
France	124.1	7.0	138.5	7.6
Germany	93.9	5.3	99.2	5.4
Other countries	1,153.5	64.7	955.9	52.3
Total imports	1,781.8	100	1,827.8	100

Main Indicators (Year-on-year changes, in %)

	Dec-2011	Avg-2011	Aug-2012	Dec-2012	Avg-2012	Jul-2013	Aug-2013
Cleared checks in Lebanese pounds ¹							
(in millions of LBP)	2,064,573	1,790,140	1,858,605	2,015,742	1,881,163	2,280,410	2,041,078
Variation in %	7.22	5.44	11.95	-2.37	5.08	15.32	9.82
Cleared checks in foreign currencies ^{1**}							
(in millions of LBP)	5,091	4,821	4,656	4,671	4,670	4,936	4,495
Variation in %	16.65	7.33	-7.15	-8.26	-3.14	-4.12	-3.46
Total cleared checks ^{**}							
(in millions of LBP)	9,739,621	9,057,553	8,877,891	9,056,942	8,920,602	9,721,101	8,817,617
Requests for information at the "Centrale des Risques" ¹							
Total	14,997	17,519	19,566	17,171	20,751	23,437	19,949
Variation in %	28.08	11.36	23.84	14.50	18.45	12.01	1.96
Construction permits ^{2**}							
(in square meters)	1,704,912	1,372,064	927,616	1,611,664	1,223,410	1,269,533	924,191
Variation in %	-11.72	-6.49	-22.28	-5.47	-10.83	6.12	-0.37
Cement deliveries ^{3**}							
(in tons)	445,835	462,481	331,030	367,034	442,379	540,862	453,260
Variation in %	11.56	6.18	-26.60	-17.68	-4.35	10.68	36.92
Collected real estate fees ⁴							
(in millions of LBP)	112,369	75,773	63,945	119,063	78,284	87,484	70,424
Variation in %	7.77	-1.59	-14.03	5.96	3.32	23.24	10.13
Total Imports ^{5**}							
(in millions of LBP)	2,510,637	2,533,221	2,686,968	2,821,736	2,674,165	2,590,174	2,756,333
Variation in %	13.22	12.22	3.64	12.39	5.56	-1.21	2.58
Total Exports ^{5**}							
(in millions of LBP)	509,227	536,026	511,381	574,936	563,380	422,162	421,396
Variation in %	-2.31	8.80	-6.62	12.90	5.10	-11.54	-17.60
Trade Deficit ^{**}							
(in millions of LBP)	2,001,410	1,997,195	2,175,587	2,246,800	2,110,785	2,168,012	2,334,936
Variation in %	18.00	13.17	6.39	12.26	5.69	1.09	7.32
Customs receipts ^{5*}							
(in millions of LBP)	189,667	190,018	188,845	191,685	196,509	205,419	195,648
Variation in %	-16.19	-19.89	6.60	1.06	3.42	-8.81	3.60
Electricity production (EDL network) ⁶							
(in millions of KWh)	916	1,033	898	950	914	1,122	1,146
Variation in %	-8.25	-0.50	-23.36	3.66	-11.54	23.09	27.70
Imports of petroleum derivatives ^{7***}							
(in metric tons)	519,410	489,466	679,440	677,241	508,489	437,683	529,514
Variation in %	-0.23	6.81	19.62	30.39	3.89	-28.73	-22.07
Freight at the Port of Beirut ^{8**}							
Total	593,439	568,776	664,888	655,062	613,800	738,384	662,680
Variation in %	11.58	5.47	1.89	10.38	7.92	9.52	-0.33
Freight incoming (tons)	511,776	489,914	577,974	573,633	531,288	631,912	589,020
Freight outgoing (tons)	73,001	66,507	75,173	71,961	70,800	106,311	73,449
Transit and free zone (tons)	8,662	12,355	11,741	9,468	11,713	161	211
Flow of passengers (B.I.A.) ⁹							
Total	445,968	471,179	627,870	495,760	495,843	581,311	726,939
Variation in %	5.27	1.83	9.21	11.16	5.23	-8.55	15.78
Arrival	247,811	234,602	283,246	251,129	240,435	305,077	343,406
Variation in %	6.10	2.02	8.16	1.34	2.49	-0.45	21.24
Departure	193,272	231,734	341,279	243,268	251,501	275,022	382,497
Variation in %	3.58	1.01	10.53	25.87	8.53	-15.16	12.08
Transit	4,885	4,843	3,345	1,363	3,907	1,212	1,036
Variation in %	40.78	44.16	-22.32	-72.10	-19.31	-75.96	-69.03

* Since July 1995, the customs dollar (LBP 800) is replaced by the official dollar exchange rate. ** Updated figures by the private sector. *** Starting January 1, 1997 preliminary data is updated to include both public and private sectors.

Sources: ¹BDL. ²Association of Engineers (Beirut, Tripoli). ³Cement Companies. ⁴Ministry of Finance. ⁵Customs Council. ⁶EDL. ⁷General Directorate of Petroleum. ⁸Port of Beirut. ⁹Beirut International Airport.

In the year to August 2013, export shares to major destination countries were as follows: Syria 14.8%, South Africa 11.9%, Saudi Arabia 8.8%, United Arab Emirates 7.8%, and Iraq 6.2%.

In August 2013, these shares were as follows:

Exports by Destination (millions USD)

	Aug 12	% of total	Aug 13	% of total
Iraq	20.7	6.1	26.3	9.4
UAE	26.6	7.8	25.5	9.1
South Africa	66.8	19.7	25.1	9.0
Saudi Arabia	27.1	8.0	23.3	8.4
Nigeria	2.4	0.7	21.3	7.6
Other countries	195.6	57.7	157.9	56.5
Total exports	339.1	100	279.4	100

Imports (millions USD)

Sections	Jan-Aug 2012	% of Total	Jan-Aug 2013	% of Total
Food & Beverages	2,184.8	15.2	2,288.0	16.0
Textiles	487.2	3.4	525.7	3.7
Leather, Plastics & Rubber	52.1	0.4	53.1	0.4
Wood & wood products	164.7	1.1	161.5	1.1
Chemical & Pharmaceutical	1,187.8	8.2	1,332.5	9.3
Paper & paper products	246.4	1.7	254.9	1.8
Stone, Clay & cement	274.5	1.9	301.7	2.1
Metal & metal products	5,226.6	36.3	4,411.0	30.8
Machinery & Appliances	2,623.3	18.2	3,212.6	22.4
Jewelry	1,061.7	7.4	812.2	5.7
Other	892.2	6.2	985.7	6.9
Total	14,401.3	100	14,338.9	100

Exports (millions USD)

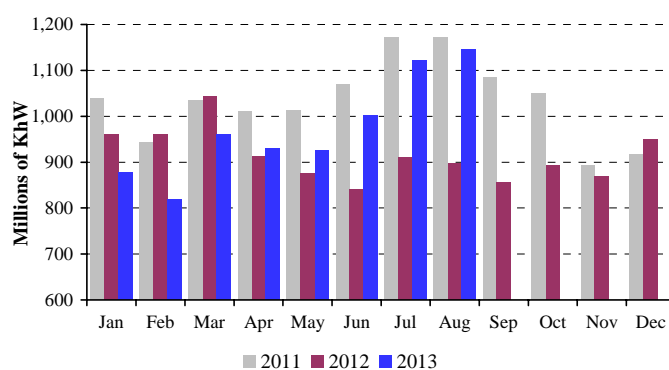
Sections	Jan-Aug 2012	% of Total	Jan-Aug 2013	% of Total
Food & Beverages	385.2	13.6	466.2	16.2
Textiles	74.8	2.6	80.7	2.8
Leather, Plastics & Rubber	9.9	0.3	12.6	0.4
Wood & wood products	11.6	0.4	11.8	0.4
Chemical & Pharmaceutical	224.9	8.0	229.1	8.0
Paper & paper products	117.3	4.2	111.5	3.9
Stone, Clay & cement	26.9	1.0	28.7	1.0
Metal & metal products	319.5	11.3	715.7	24.9
Machinery & Appliances	368.9	13.0	401.5	14.0
Jewelry	1,099.9	38.9	626.6	21.8
Other	188.6	6.7	190.3	6.6
Total	2,827.4	100	2,874.7	100

Source: Customs Higher Council

ENERGY

Power production increased by 27.7%, to 1,146.2 million kWh during the month.

Monthly Electricity Production



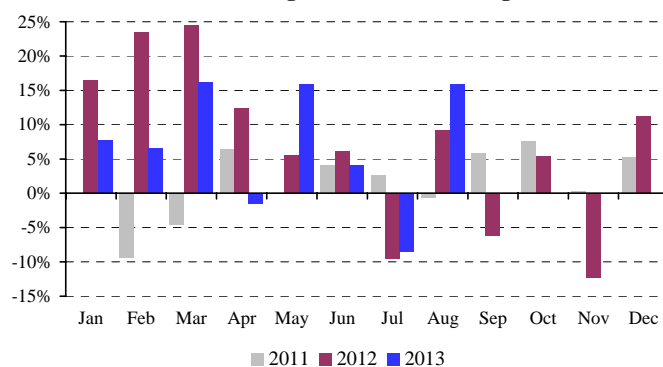
Source: Electricité du Liban

TRANSPORTATION

At Beirut International Airport, total plane traffic and passenger flow rose by 4.1% and 15.8% respectively. The number of incoming and outgoing passengers improved by 21.2% and 12.1% respectively, while that of transiting passengers dropped by 69.0%.

Year-on-year, airfreight widened by 9.5%, as incoming freight went up by 24.8%, while outgoing freight went down by 6.1%.

Annual Changes in Flow of Passengers



Source: Beirut International Airport

In August 2013, the number of ships and the volume of maritime freight at the Port of Beirut narrowed by 11.1% and 0.3% respectively. Incoming freight grew by 1.9%, while outgoing and transiting freight fell by 2.3% and 98.2% respectively.

MONETARY SECTOR

NET FOREIGN ASSETS OF THE BANKING SYSTEM

The balance of payments posted a deficit equivalent to USD 223 million in August 2013. This was reflected in a drop in the net foreign assets of Banque du Liban by an amount of USD 298.8 million, and an increase in those of banks and financial institutions by USD 75.8 million. In the year to August, the BOP registered a cumulative deficit of USD 1,180.2 million, compared with a cumulative deficit of USD 1,839.5 million in the same period of 2012.

CENTRAL BANK FOREIGN CURRENCY RESERVES

Gross foreign-currency reserves of Banque du Liban attained USD 37,242.1 million at end-August 2013, increasing annually by USD 888.1 million or 2.4%. Total foreign assets, including gold, totaled USD 50,124.8 million. The average US dollar exchange rate remained stable on the domestic market, standing at LBP 1,507.50.

INTEREST RATES

Interest rates remained unchanged in August 2013 on all categories of Treasury bills and bonds. Accordingly, at the end of the month, yields stood at: 4.44% on the three-month, 4.99% on the six-month, 5.35% on the one-year, 5.84% on the two-year, and 6.50% on the three-year.

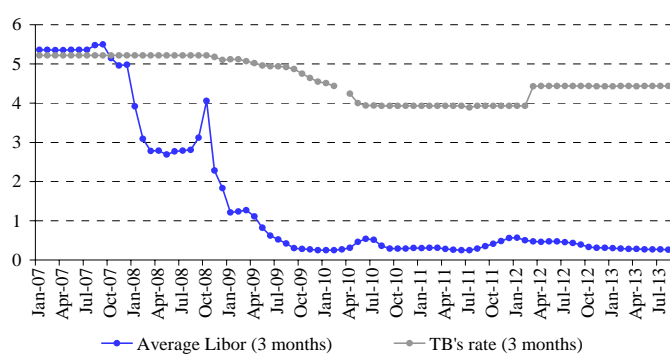
On the Lebanese pound, bank interest rates on debit and credit accounts went up by 11 and 4 basis points respectively, reaching 7.24% and 5.47%.

These rates increased also on both USD debit and credit accounts. Accordingly, the USD weighted average lending rate reached 7.16% in August (+14 basis points), and the USD average deposit rate was up to 2.91% (+2 basis points).

As a result, the spread between the LBP and USD lending rates narrowed from 11 points in July 2013 to 8 points in August 2013. In contrast, the spread between the LBP and USD deposit rates widened during the same period from 2.54 points to 2.56 points.

The three-month Libor rate stood at 0.26% in August 2013, compared with 0.27% in both July and June 2013.

Spread between 3-month TBs & Libor rate



Yields on the 45-day and 60-day certificates of deposit issued by Banque du Liban recorded no monthly change in August, stabilizing at 3.57% and 3.85% respectively.

On the other hand, the Central Bank maintained the discount and Repo rates at 10.00% each, as adopted since December 2009.

MONETARY AGGREGATES

The monetary aggregate M3 reached LBP 163,226.5 billion at end-August, increasing annually by 7.1%. Bank

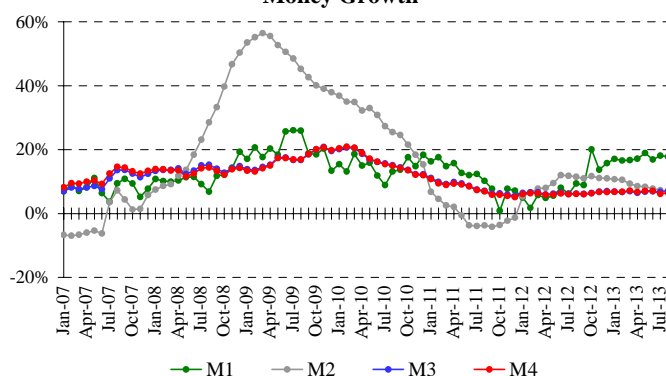
credits to the private sector remained the main factor in money creation.

Regarding money stock components, LBP-denominated deposits and foreign-currency deposits registered a growth of 6.2% and 7.4% respectively.

Year-on-Year Changes in Money Components (in %)

	M1	M2	M3	M4
Aug-2012	9.35	11.46	6.17	6.12
Sep-2012	8.86	10.95	6.14	6.01
Oct-2012	20.08	11.64	6.40	6.33
Nov-2012	13.69	11.07	6.82	6.69
Dec-2012	15.72	10.97	6.97	6.68
Jan-2013	17.06	10.70	6.81	6.80
Feb-2013	16.55	10.54	6.71	6.75
Mar-2013	16.66	9.30	6.98	7.15
Apr-2013	17.12	8.56	6.43	6.70
May-2013	18.93	8.39	6.82	7.05
June-2013	16.89	7.82	6.92	7.09
July-2013	18.11	7.25	6.79	6.16
Aug-2013	17.79	6.70	7.12	6.45

Money Growth



PUBLIC DEBT

According to figures released by the Ministry of Finance, net total public debt increased in August 2013 by LBP 887 billion, totaling LBP 77,979 billion at the end of the month.

This increase stems from a rise in both the foreign-currency-denominated public debt and the LBP-denominated net public debt, as the former increased by an amount of USD 69 million, to USD 26,243 million, and the latter by LBP 784 billion, to LBP 38,418 billion at end-August.

Year-on-year, the net total public debt, the LBP-denominated debt and the foreign-currency-denominated debt grew by 8.1%, 3.1%, and 13.5% respectively.

Outstanding Treasury Bills by Maturity (% of total)

	3 months	6 months	12 months	24 months and above
Aug-2012	0.22	2.42	1.99	95.37
Sep-2012	0.20	2.44	1.75	95.61
Oct-2012	0.19	2.52	1.89	95.41
Nov-2012	0.19	2.54	1.85	95.41
Dec-2012	0.63	2.62	1.93	94.82
Jan-2013	1.01	1.99	1.98	95.03
Feb-2013	1.05	1.75	1.98	95.22
Mar-2013	0.57	1.58	1.83	96.01
Apr-2013	0.45	1.46	1.79	96.31
May-2013	0.27	1.40	1.75	96.58
June-2013	0.31	1.14	1.75	96.79
July-2013	0.23	1.44	1.78	96.55
Aug-2013	0.31	1.25	1.80	96.64

BANKING ACTIVITY

CONSOLIDATED BALANCE SHEET

The consolidated balance sheet of commercial banks reached LBP 239,034 billion at end-August 2013, rising monthly by 0.48%, following a decline of 0.08% in the previous month. Year-on-year, it grew by 7.83%.

VOLUME OF CREDITS

a-Commercial Banks

Credits granted by commercial banks to the private sector, resident and non-resident, went up in August 2013 by 0.88%, compared with 0.74% in the previous month. At end-August 2013, these credits reached LBP 68,695 billion, with a year-on-year increase of 9.22%. They were distributed as follows:

- Credits in Lebanese pound amounted to LBP 15,897 billion at end-August 2013, rising monthly by 1.33%, compared with 1.32% in July 2013. Year-on-year, they grew by 12.05%, and their share from total bank credits totaled 23.14%, compared with 22.56% in August 2012.
- Credits in foreign currencies expanded by 0.75% in August 2013, compared with 0.57% in July 2013. Year-on-year, they increased by 8.39%, totaling USD 35,012 million at end-August 2013.

b-Investment Banks

Credits granted by investment banks reached LBP 1,708 billion at end-August 2013, rising by 0.11%, following a decrease of 4.89% in July 2013. In comparison with August 2012, they fell by 1.12%.

VOLUME OF DEPOSITS

a-Commercial Banks

Private sector deposits at commercial banks by residents and non-residents improved by 0.16% in August 2013, following a slight decline of 0.07% in the previous month. Year-on-year, their volume widened by 8.44%, and they amounted to LBP 198,058 billion at end-August 2013. They were distributed as follows:

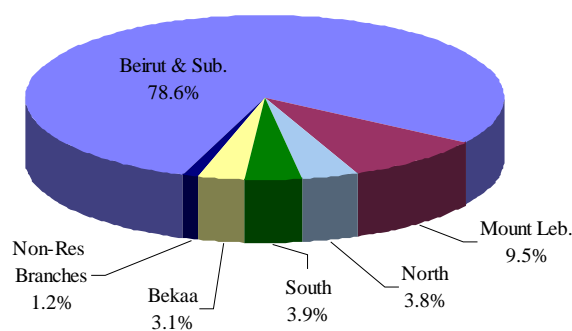
- Deposits in Lebanese pound progressed by 0.37% in August 2013 and reached LBP 67,856 billion at the end of the month, following a decrease of 0.27% in July. Year-on-year, they expanded by 5.73%, accounting for 34.26% of total deposits, compared with 35.14% at end-August 2012.
- Deposits in foreign currencies registered a slight increase of 0.04% in August, similarly to July 2013. Year-on-year, they went up by 9.90%, totaling USD 86,341 million at end-August 2013.

b-Investment Banks

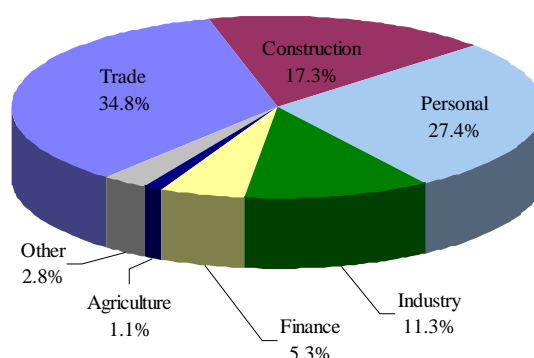
Private sector deposits at investment banks fell slightly by 0.22% during the month, compared with a decline by 4.00% in July 2013. Year-on-year, they decreased by 10.75%, from LBP 3,314 billion at end-August 2012 to LBP 2,957 billion at end-August 2013.

DISTRIBUTION OF CREDITS

Distribution of Credits by Region



Distribution of Credits by Sector



CREDIT-DEPOSIT RATIO

At end-August 2013, total credits accounted for 34.68% of total deposits, compared with 34.44% at end-August

2012, and detailed as follows:

- Credit/deposit ratio in Lebanese pound: 23.43%, compared with 22.11%.
- Credit/deposit ratio in foreign currencies: 40.55%, compared with 41.12%.

SHAREHOLDERS' FUNDS

Shareholders' equity expanded by 0.52% in August 2013, compared with 0.20% in July 2013. Year-on-year, it grew by 14.66%, reaching LBP 20,544 billion at end-August 2013.

The capital/total asset ratio in commercial banks stabilized at 8.59% at end-August 2013, compared with 8.08% in August 2012.

The capital/total deposit ratio reached 10.37% at end-August 2013, up from 10.33% in July 2013, and 9.81% in August 2012.

In contrast, the capital/total credit ratio went down to 29.91% at end-August 2013, compared with 30.01% in July 2013, and 28.49% in August 2012.

DOLLARIZATION

The dollarization rate of bank deposits fell to 65.74% at end-August 2013, compared with 65.81% at end-July 2013 and 64.86% at end-August 2012.

Likewise, the dollarization rate of bank credits stood at 76.86% at end-August 2013, down from 76.96% at end-July 2013 and 77.44% at end-August 2012.

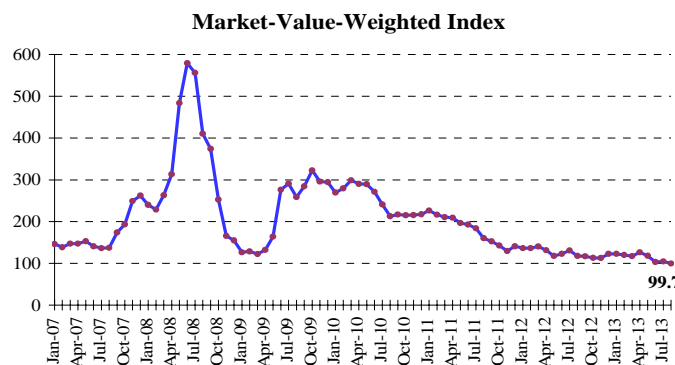
FINANCIAL MARKETS

The Beirut Stock Exchange capitalization-weighted index regressed by 4.50% in August 2013, closing at 99.68 points, compared with 104.38 points in July 2013. Similarly, the shares traded on the BSE registered a decrease in volume and in value.

During the month, no domestic or international CD issue was launched or matured.

BDL Market-Value-Weighted Index (Jan-1996=100)

August 2012	117.74
September 2012	116.73
October 2012	113.13
November 2012	112.98
December 2012	122.57
January 2013	122.70
February 2013	119.94
March 2013	117.09
April 2013	126.54
May 2013	118.20
June 2013	103.02
July 2013	104.38
August 2013	99.68

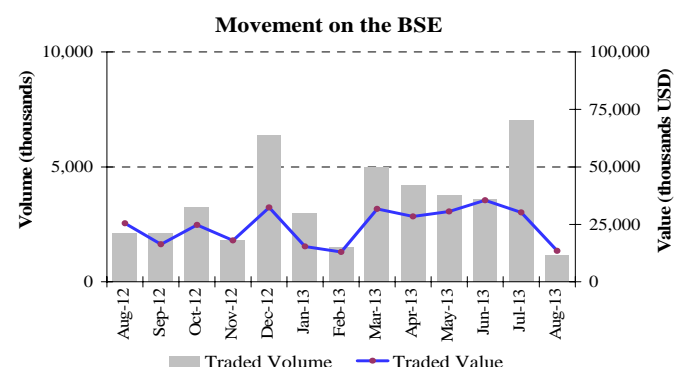


BEIRUT STOCK EXCHANGE

Beirut Stock Exchange

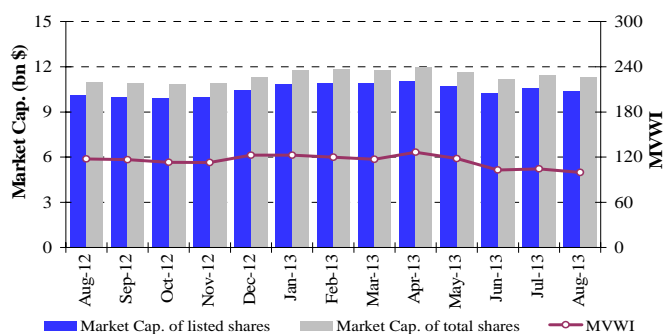
Date	Traded Shares		Market Capitalization (billions USD)
	Volume (millions)	Value (millions USD)	
Aug-2012	2.13	25.49	10.99
Sep-2012	2.11	16.36	10.91
Oct-2012	3.25	24.75	10.84
Nov-2012	1.82	17.98	10.89
Dec-2012	6.39	32.38	11.31
Jan-2013	2.97	15.35	11.76
Feb-2013	1.49	12.99	11.84
Mar-2013	4.98	31.73	11.80
Apr-2013	4.18	28.43	11.98
May-2013	3.77	30.56	11.62
June-2013	3.58	35.44	11.15
July-2013	7.01	30.20	11.48
Aug-2013	1.14	13.45	11.31

In August 2013, the volume of traded shares shrank by 83.80%, standing at 1.137 million shares, compared with 7.014 million shares in the previous month. Likewise, the value of traded shares went down by 55.47% in April 2013, totaling USD 13.446 million, compared with USD 30.196 million in the previous month.



Regarding the shares traded during the month, Byblos Bank common shares were leading in volume, with 26.96% of total trading. In terms of value, the Solidere Class A shares were leading with 16.65%.

Movement of the MVWI and Market Cap. on BSE



During the months of August and July 2013, no transaction was performed on the BSE.

On the BSE, the total market value of the shares of listed issuers declined monthly by 1.44%, reaching USD 11.311 billion in August 2013, compared with USD 11.476 billion in July 2013. Likewise, the market value of listed shares fell by 1.57%, from USD 10.562 billion in July 2013 to USD 10.397 billion in August 2013.

PREFERRED AND PRIMARY STOCKS

Issuer	Type	Price	Volume (thousands)	Value (millions \$)
Bank of Beirut	Preferred Shares "E"	25 \$	2,400	60
	Preferred Shares "H"	25 \$	5,400	135
	Preferred Shares "I"	25 \$	5,000	125
BEMO Bank	Preferred Shares	100 \$	200	20
BLOM Bank	Preferred Shares 2011	10 \$	20,000	200
Audi-Saradar Bank	Preferred Shares "E"	100 \$	1,250	125
	Preferred Shares "F"	100 \$	1,500	150
	Preferred Shares "G"	100 \$	1,500	150
	Preferred Shares "H"	100 \$	750	75
BLC Bank	Preferred Shares "A"	100 \$	400	40
	Preferred Shares "B"	100 \$	550	55
Byblos Bank	Preferred Shares 2008	100 \$	2,000	200
	Preferred Shares 2009	96 \$	2,000	192

GLOBAL DEPOSITARY RECEIPT (GDR)

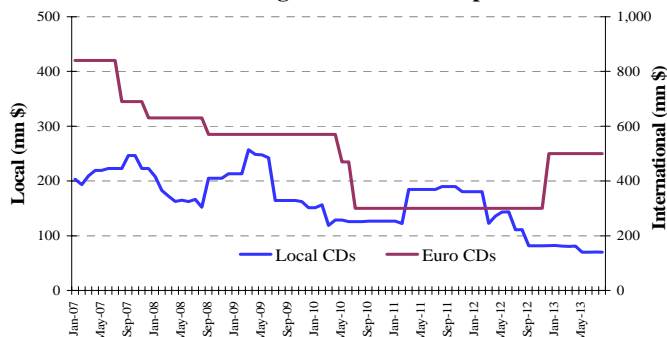
At end-August 2013, the prices of GDRs issued by Byblos Bank and Audi-Saradar Bank decreased by 4.76% and 4.22% respectively, the former ranging between USD 68.00 and USD 75.00, and the latter between USD 6.20 and USD 6.75. Similarly, the prices of GDRs issued by Solidere dropped by 5.79%, ranging between USD 10.26 and USD 11.10. In contrast, the prices of GDRs issued by BLOM Bank increased by 1.19%, ranging between USD 8.32 and USD 8.70.

CERTIFICATES OF DEPOSIT

Certificates of Deposit (millions USD)

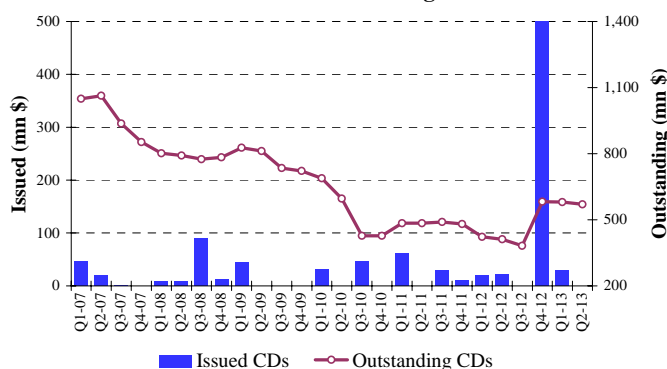
	Issued	Outstanding			Number of Banks
		Local	International	Total	
July 2013	-	70.1	500	570.1	6
Aug 2013	-	70.0	500	570.0	6

Outstanding Certificates of Deposit



The value of total outstanding CDs (domestic and international) declined by 0.01%, totaling USD 570.04 million (of which an amount of USD 70.04 million on the domestic market).

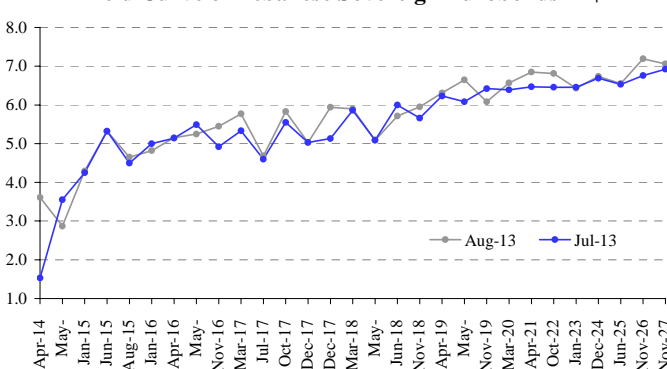
Issued and Outstanding CDs



LEBANESE REPUBLIC FOREIGN CURRENCY BONDS

The total value of Lebanese Treasury Eurobonds went down to USD 23.830 billion at end-August 2013, compared with USD 23.832 billion at end-July 2013.

Yield Curve of Lebanese Sovereign Eurobonds in \$



LEBANESE BANKS' FOREIGN CURRENCY BONDS

The prices of bonds issued by BEMO Bank S.A.L. regressed at end-August 2013, closing at USD 101.58, compared with USD 101.73 in the previous month.

The value of domestic bonds issued by financial institutions recorded no change at end-August 2013, stabilizing at USD 19.326 million.

Lebanese Republic Foreign Currency Bonds

	Maturity	Closing of July 2013			Closing of August 2013		
		Price	Yield	Spread	Price	Yield	Spread
5 years (USD 18.483 millions) <i>Special TBs</i>	25/03/2014	-	-	-	-	-	-
8 years (USD 676.902 millions)	14/04/2014	104.00	1.53	146	102.25	3.61	356
6 years (USD 881.612 millions)	02/05/2014	103.95	3.55	343	103.98	2.87	282
5 years (USD 250 millions)	15/01/2015	102.25	4.25	414	102.07	4.29	417
5 years (USD 15.985 millions) <i>Special TBs</i>	22/04/2015	-	-	-	-	-	-
5 years (USD 6.930 millions) <i>Special TBs</i>	15/07/2015	-	-	-	-	-	-
3 years (USD 500 millions)	12/06/2015	97.81	5.32	494	97.81	5.32	494
7 years (USD 500 millions)	06/08/2015	107.48	4.55	424	106.99	4.65	425
5 years (USD 8.098 millions) <i>Special TBs</i>	30/11/2015	-	-	-	-	-	-
15 years (USD 750 millions)	19/01/2016	108.00	5.00	469	108.15	4.82	443
3 years (USD 600 millions)	23/04/2016	98.36	5.14	442	98.40	5.15	438
15 years (USD 400 millions)	11/05/2016	115.52	5.49	490	115.75	5.25	448
5 years (USD 500 millions)	02/11/2016	99.48	4.92	432	97.99	5.45	467
8 years (USD 1,500 millions)	20/03/2017	111.95	5.33	472	110.23	5.77	499
10 years (USD 300 millions)	20/07/2017	97.96	4.60	310	97.69	4.68	391
5 years (USD 600 millions)	20/10/2017	97.95	5.55	415	97.00	5.83	423
7 years (LBP 1,500,000 millions)	18/12/2017	104.84	6.82	-	103.95	6.82	-
15 years (USD 950 millions)	27/12/2017	99.92	5.03	353	99.94	5.03	342
15 years (USD 2,007.511 millions)	31/12/2017	97.50	5.13	373	95.90	5.94	434
15 years (USD 700 millions)	07/03/2018	96.55	5.86	436	96.49	5.90	429
15 years (USD 200 millions)	27/05/2018	99.78	5.09	359	99.79	5.09	349
5 years (USD 700 millions)	12/06/2018	96.42	6.00	450	97.69	5.71	409
8 years (USD 1,000 millions)	12/11/2018	97.70	5.66	425	96.49	5.95	434
7 years (Euro 445 millions)	28/11/2018	98.00	5.79	490	96.02	6.26	520
5 years (USD 500 millions)	23/04/2019	96.49	6.23	473	96.18	6.31	470
8 years (USD 650 millions)	20/05/2019	99.59	6.08	468	96.95	6.65	504
7 years (USD 1,500 millions)	28/11/2019	95.00	6.42	441	96.75	6.08	387
10 years (USD 1,200 millions)	09/03/2020	99.92	6.39	435	98.99	6.57	436
15 years (USD 2,092.469 millions)	12/04/2021	110.64	6.47	443	108.20	6.85	464
12 years (USD 1,540 millions)	04/10/2022	97.50	6.46	387	95.24	6.81	406
10 years (USD 1,100 millions)	27/01/2023	96.75	6.46	387	97.00	6.43	361
15 years (USD 250 millions)	03/12/2024	102.40	6.69	407	102.03	6.74	397
13 years (USD 800 millions)	12/06/2025	97.68	6.53	391	97.60	6.55	377
15 years (USD 725 millions)	27/11/2026	98.62	6.76	414	94.98	7.19	443
15 years (USD 1,000 millions)	29/11/2027	98.50	6.92	429	97.23	7.06	432

1. MONETARY SURVEY

(end of period, in billions of Lebanese Pounds)

	Dec 2011	Jul 2012	Aug 2012	Dec 2012	Jul 2013	Aug 2013
Currency in Circulation	2,891.0	2,745.7	2,879.2	3,213.2	3,222.7	3,344.4
Sight Deposits in L.L.	3,247.4	3,452.2	3,576.9	3,890.4	4,097.6	4,260.1
M1	6,138.4	6,198.0	6,456.1	7,103.6	7,320.3	7,604.5
Other Deposits in L.L.	52,504.7	55,893.6	56,302.6	57,973.5	59,274.1	59,360.3
M2	58,643.0	62,091.5	62,758.7	65,077.0	66,594.4	66,964.8
Deposits in Foreign Currencies	87,639.7	89,093.0	89,291.9	91,401.8	94,866.1	95,918.5
Bonds	292.9	326.0	326.4	318.2	335.7	343.3
M3	146,575.6	151,510.6	152,377.1	156,797.0	161,796.1	163,226.5
M4*	154,364.6	159,679.6	160,605.1	164,679.0	169,511.1	170,956.5
Net Claims on Foreign Sector	65,463.7	63,939.1	63,751.2	64,437.4	58,305.7	58,892.4
Net Claims on Public Sector	50,909.1	52,363.6	53,218.6	54,596.4	56,760.0	57,802.3
Valuation Adjustment	-13,284.7	-14,071.8	-14,618.1	-14,707.9	-10,165.3	-11,058.8
Claims on Private Sector	54,163.8	57,014.6	57,519.0	59,690.2	62,109.3	62,854.3
Other Items Net	-10,676.3	-7,734.9	-7,493.5	-7,219.0	-5,213.6	-5,263.6
TOTAL	146,575.6	151,510.6	152,377.1	156,797.0	161,796.1	163,226.5

* M4 = M3 + Treasury Bills held by the non-banking system; M3 and M4 include Bonds starting July 1996

1.1 BANKING SYSTEM : ASSETS AND LIABILITIES IN GOLD AND FOREIGN CURRENCIES

(end of period, in millions of US dollars)

	Dec 2011	Jul 2012	Aug 2012	Dec 2012	Jul 2013	Aug 2013
Banque du Liban	47,574.2	50,851.2	51,447.3	51,933.0	49,603.5	49,909.5
Gold	14,400.7	14,979.8	15,309.8	15,312.3	12,289.5	12,882.7
Foreign Currencies Reserves	33,391.6	36,088.1	36,354.0	36,836.6	37,529.2	37,242.1
Foreign Liabilities	218.1	216.8	216.5	216.0	215.3	215.3
Commercial Banks	-1,579.6	-3,900.1	-4,546.8	-3,821.8	-6,564.1	-6,467.7
Claims on Non Resident Banks	14,629.8	12,835.0	12,874.7	14,396.0	13,687.8	13,215.1
Claims on Non Residents	5,150.2	5,306.0	5,208.5	5,606.6	5,402.0	5,305.6
Other Foreign Assets	5,716.7	5,851.5	5,883.8	6,164.5	6,317.0	6,314.1
Liabilities of Non Resident Banks	5,813.4	5,955.8	5,659.0	5,902.0	4,895.3	4,927.9
Deposits of Non Residents	21,262.9	21,936.8	22,854.8	24,086.9	27,075.4	26,374.7
Medium and Long Term Banks	-162.7	-140.5	-118.5	-110.4	6.0	-14.2
Claims on Foreign Sector	350.8	336.2	342.0	327.9	434.5	465.0
Liabilities to the Foreign Sector	513.5	476.8	460.6	438.4	428.5	479.2

1.2 PRIVATE SECTOR DEPOSITS IN COMMERCIAL BANKS

(end of period, in billions of Lebanese Pounds)

	Dec 2011	Jul 2012	Aug 2012	Dec 2012	Jul 2013	Aug 2013
Deposits of Residents	142,385.4	147,456.7	148,197.0	152,124.1	156,935.0	158,298.6
- Deposits of Res. in L.L.	55,388.7	58,895.2	59,405.9	61,299.4	62,676.8	62,936.2
- Deposits of Res. In For. Curr.	86,996.7	88,561.5	88,791.1	90,824.7	94,258.2	95,362.5
Deposits of Non Residents	32,053.9	33,069.7	34,453.6	36,311.0	40,816.1	39,759.8
- Deposits of N. Res. in L.L.	4,056.6	4,720.0	4,774.9	4,996.6	4,926.4	4,919.4
- Deposits of N. Res. in For. Curr.	27,997.3	28,349.7	29,678.7	31,314.4	35,889.7	34,840.4
Total Deposits in L.L.	59,445.3	63,615.2	64,180.8	66,296.0	67,603.3	67,855.6
Total Deposits in For. Curr.	114,994.0	116,911.2	118,469.7	122,139.1	130,147.9	130,202.9
GRAND TOTAL	174,439.3	180,526.4	182,650.6	188,435.1	197,751.1	198,058.5

1.3 TRADE & BALANCE OF PAYMENT RESULTS

(in millions of US Dollars)

	Imports (C.I.F.)	Exports (F.O.B.)	Trade Balance	Central Bank	Banks	Balance of Payment **
2012 (Jan - Dec)	21,279.8	4,483.1	-16,796.7	580.9	-2,117.8	-1,536.9
April	1,547.8	318.6	-1,229.2	794.7	-1,337.6	-542.9
May	1,645.0	354.6	-1,290.4	-16.2	-65.3	-81.5
June	1,712.9	344.9	-1,368.0	252.4	-275.8	-23.4
July	1,738.6	316.5	-1,422.1	-237.8	-83.9	-321.7
August	1,781.8	339.1	-1,442.7	119.4	-616.1	-496.7
September	1,629.5	470.6	-1,158.9	-261.9	169.7	-92.2
December	1,871.2	381.3	-1,489.9	-973.2	1,285.3	312.1
2013						
January	1,645.9	404.6	-1,241.3	1,179.9	-797.4	382.5
February	1,790.9	380.6	-1,410.3	1,001.2	-1,092.9	-91.7
March	2,076.4	406.6	-1,669.8	-18.9	-334.1	-353.0
April	1,849.2	412.0	-1,437.3	660.7	-616.4	44.3
May	1,797.1	363.4	-1,433.7	-173.4	42.6	-130.8
June	1,633.9	348.2	-1,285.7	-192.2	-41.2	-233.4
July	1,717.6	279.9	-1,437.7	-789.5	214.4	-575.1
August	1,827.8	279.4	-1,548.4	-298.8	75.8	-223.0

NB: These values are subject to change.

** Valuation Adjustment from fluctuations of US dollar with respect to other foreign currencies is excluded; Net foreign assets of specialized banks and financial institutions are included, starting January 1995.

2. BALANCE SHEET OF BANQUE DU LIBAN

(end of period, in billions of Lebanese Pounds)

	Dec 2011	Jul 2012	Aug 2012	Dec 2012	Jul 2013	Aug 2013
Assets						
Foreign Assets	68,162.5	67,270.1	67,604.5	68,266.8	65,663.0	66,150.6
-Gold	21,709.0	22,582.1	23,079.6	23,083.3	18,526.4	19,420.7
-Foreign Currencies	46,453.4	44,687.9	44,524.9	45,183.5	47,136.5	46,729.9
-Other Foreign Assets						
Claims on Private Sector	380.1	365.6	367.4	380.2	404.4	403.9
Loans to Commercial Banks	2,047.2	2,288.4	2,387.4	2,386.3	2,855.9	2,885.1
Loans to Specialized Financial Corp.	51.7	51.7	51.7	51.7	73.8	75.2
Loans to Public Sector	139.8	85.1	85.5	55.4		
Securities Portfolio	19,846.9	24,821.1	25,293.6	24,989.9	25,448.3	25,669.2
Fixed Assets	357.7	386.6	387.9	386.6	378.5	407.9
Unclassified Assets	14,986.5	17,642.6	18,099.1	19,096.2	22,639.6	23,151.0
TOTAL	105,972.3	112,911.3	114,277.1	115,613.0	117,463.4	118,742.7
Liabilities						
Currency in Circulation outside BDL	3,283.3	3,202.5	3,320.2	3,638.5	3,801.4	3,916.7
Commercial Banks Deposits	68,787.9	74,130.4	75,297.5	76,018.4	80,832.2	81,792.9
Corporations Deposits	963.8	940.9	932.4	1,092.3	1,250.3	1,192.7
Private Sector Deposits	42.4	41.2	42.0	49.2	52.5	47.5
Public Sector Accounts	7,984.6	9,235.2	8,734.0	8,907.9	9,634.8	8,984.9
Valuation Adjustment	13,284.7	14,071.8	14,618.1	14,707.9	10,165.3	11,058.8
Foreign Liabilities	328.8	326.8	326.3	325.5	324.5	324.5
Special Long Term Liabilities	2,503.3	2,353.2	2,201.2	2,201.5	2,051.0	1,899.6
Securities other than shares	3,015.0	3,015.0	3,015.0	3,015.0	2,605.2	2,605.2
Capital Accounts	4,555.8	4,495.3	4,495.2	5,080.1	5,018.7	5,018.7
Unclassified Liabilities	1,222.6	1,099.1	1,295.0	576.5	1,727.4	1,901.2
TOTAL	105,972.3	112,911.3	114,277.1	115,613.0	117,463.4	118,742.7

3. CONSOLIDATED BALANCE SHEET OF COMMERCIAL BANKS

(end of period, in billions of Lebanese Pounds)

	Dec 2011	Jul 2012	Aug 2012	Dec 2012	Jul 2013	Aug 2013
Assets						
Reserves	71,535.4	77,250.1	78,752.9	79,604.0	83,917.1	84,790.7
Vault Cash	392.3	456.8	441.0	425.4	578.8	572.3
Deposits at BDL	71,143.1	76,793.3	78,312.0	79,178.7	83,338.3	84,218.4
Claims on Private Sector	51,594.4	54,542.0	55,044.6	57,052.4	59,952.7	60,696.8
In Lebanese Pounds	12,820.5	13,973.6	14,187.4	14,653.0	15,689.1	15,897.2
In Foreign Currencies	38,773.9	40,568.4	40,857.1	42,399.4	44,263.6	44,799.6
Claims on Public Sector	44,055.1	44,695.5	45,095.3	46,930.5	49,561.0	49,840.3
Claims on Foreign Sector	38,436.3	36,168.7	36,130.3	39,446.9	38,300.5	37,438.5
Fixed Assets	5,130.8	5,225.8	5,169.9	5,566.3	5,707.6	5,761.4
Unclassified Assets	1,166.2	1,467.2	1,484.0	363.3	461.4	506.2
TOTAL	211,918.2	219,349.2	221,677.0	228,963.5	237,900.4	239,033.9
Liabilities						
Resident Private Sector Deposits	142,385.4	147,456.7	148,197.0	152,124.1	156,935.0	158,298.6
Demand Deposits in L.L.	3,200.6	3,400.0	3,517.3	3,808.1	4,031.1	4,194.4
Time and Saving Deposits in L.L.	52,188.1	55,495.2	55,888.6	57,491.3	58,645.7	58,741.8
Deposits in Foreign Currencies	86,996.7	88,561.5	88,791.1	90,824.7	94,258.2	95,362.5
Public Sector Deposits	2,999.1	3,072.5	3,139.2	4,008.0	4,073.6	4,227.4
Non Resident Private Sector Deposits	32,053.9	33,069.7	34,453.6	36,311.0	40,816.1	39,759.8
Non Resident Financial Sect. Deposits	8,763.7	8,978.4	8,531.0	8,897.3	7,379.7	7,428.8
Other Financial Liabilities	661.4	653.0	661.2	395.9	417.8	427.0
Capital Accounts	16,161.5	17,896.4	17,917.3	19,057.8	20,437.0	20,544.2
Unclassified Liabilities	8,893.2	8,222.6	8,777.8	8,169.4	7,841.2	8,348.1
TOTAL	211,918.2	219,349.2	221,677.0	228,963.5	237,900.4	239,033.9

4.1 INTEREST RATES : COMMERCIAL BANKS

(in percent)

Period	Lending & Deposits Rates (LL)					Interbank Rates on Call (LL) End of Period	Lending & Deposits Rates (\$)					Libor 3-month Period Average
	Discount & Loans	Checking & Current Accounts	Savings at Call	Term Deposits	Average Rate on Deposits		Discount & Loans	Checking & Current Accounts	Savings at Call	Term Deposits	Average Rate on Deposits	
2012												
May	7.34	0.98	2.41	5.79	5.49	2.75	7.12	0.44	1.20	3.26	2.83	0.47
Jun	7.44	1.06	2.50	5.75	5.45	2.75	7.15	0.31	0.85	3.25	2.78	0.47
Jul	7.24	1.02	2.44	5.75	5.45	2.75	7.19	0.33	1.26	3.27	2.84	0.45
Aug	7.27	0.96	2.22	5.83	5.51	2.75	7.26	0.27	1.10	3.29	2.84	0.43
Sep	7.30	1.11	2.50	5.73	5.43	2.75	7.16	0.31	0.83	3.30	2.83	0.39
Oct	7.31	1.22	2.75	5.76	5.43	2.75	7.15	0.29	1.16	3.33	2.87	0.33
Nov	7.11	1.22	2.82	5.79	5.38	2.75	7.09	0.28	1.20	3.31	2.85	0.31
Dec	7.07	1.16	2.93	5.78	5.41	2.75	6.87	0.26	0.88	3.35	2.86	0.31
2013												
Jan	7.32	1.13	2.84	5.82	5.43	2.75	6.98	0.25	1.18	3.35	2.88	0.30
Feb	7.47	0.78	1.83	5.83	5.46	2.75	7.05	0.21	1.11	3.38	2.94	0.29
Mar	7.28	0.89	2.31	5.79	5.44	2.75	6.95	0.22	0.84	3.41	2.97	0.28
Apr	7.27	0.69	2.03	5.82	5.43	2.75	6.90	0.20	1.15	3.41	2.97	0.28
May	7.35	0.72	2.06	5.86	5.49	2.75	6.97	0.20	0.82	3.38	2.90	0.27
Jun	7.87	0.68	2.00	5.79	5.39	2.75	6.97	0.18	0.81	3.35	2.86	0.27
Jul	7.13	0.64	2.10	5.84	5.43	2.75	7.02	0.23	0.83	3.38	2.89	0.27
Aug	7.24	0.65	2.12	5.87	5.47	2.75	7.16	0.17	0.80	3.42	2.91	0.26

4.2 TREASURY BILLS & MONEY MARKET RATES

(end of period, in percent)

Spread Between 3 month TB's yield & Libor 3 month

	Jan	Feb	Mar	Apr	May	June	July	Aug	Sep	Oct	Nov	Dec
2010	4.26	4.19	4.17	3.93	3.54	3.40	3.43	3.57	3.64	3.64	3.64	3.63
2011	3.63	3.62	3.62	3.65	3.67	3.68	3.68	3.64	3.58	3.52	3.45	3.37
2012	3.36	3.43	3.96	3.98	3.97	3.97	3.99	4.01	4.05	4.11	4.12	4.12
2013	4.13	4.15	4.16	4.15	4.17	4.17	4.17	4.18				

Interest Rates on Treasury Bills *

Period	3 months		6 months		12 months		24 months	36 months	Repo Rate
	Discount	Yield	Discount	Yield	Discount	Yield	Coupon Rate	Coupon Rate	
2010	3.89	3.93	4.42	4.52	4.59	4.81	5.34	5.94	10.00
2011	3.89	3.93	4.40	4.50	4.59	4.81	5.34	5.94	10.00
2012									
Aug	4.39	4.44	4.87	4.99	5.08	5.35	5.84	6.50	10.00
Dec	4.38	4.43	4.87	4.99	5.08	5.35	5.84	6.50	10.00
2013									
Jun	4.39	4.44	4.87	4.99	5.08	5.35	5.84	6.50	10.00
Jul	4.39	4.44	4.87	4.99	5.08	5.35	5.84	6.50	10.00
Aug	4.39	4.44	4.87	4.99	5.08	5.35	5.84	6.50	10.00

* In March 2005, a 4 and 5 years treasury bills have been issued at a coupon rate of 10.3% 11.3% respectively.

5. BANKS CLEARING

	In Lebanese Pounds		In Foreign Currencies							
	<i>(Number in thousands, Value in billions of LBP)</i>		<i>(Numbers in unit, Values in thousands of USD)</i>							
	Number	Value	Pound Sterling		US Dollar		Euro		Total Clearing in FX	
Number			Value	Number	Value	Number	Value	Number	Value	
2010	3,512	20,374	3,393	73,221	9,285,953	52,557,833	102,805	1,267,733	9,392,151	53,898,787
Jan	276	1,640	242	5,661	740,375	4,332,382	7,744	101,403	748,361	4,439,446
Feb	248	1,456	231	4,559	648,508	3,828,500	7,168	90,640	655,907	3,923,700
Mar	314	1,790	286	3,994	814,172	5,164,869	8,977	130,244	823,435	5,299,107
Apr	279	1,596	276	6,041	747,938	4,496,295	8,189	109,325	756,403	4,611,661
May	288	1,611	316	7,149	776,048	4,553,378	8,990	107,284	785,354	4,667,810
Jun	297	1,674	314	8,712	796,444	4,497,668	8,975	96,778	805,733	4,603,159
Jul	308	1,780	312	6,057	846,471	4,803,820	9,234	92,459	856,017	4,902,336
Aug	288	1,736	299	7,067	799,656	4,368,926	8,768	94,983	808,723	4,470,976
Sep	294	1,693	248	6,796	759,001	3,916,325	8,290	114,316	767,539	4,037,437
Oct	310	1,849	322	5,156	805,071	4,408,437	9,105	119,606	814,498	4,533,199
Nov	285	1,625	257	6,531	748,323	3,936,498	8,146	102,508	756,726	4,045,537
Dec	324	1,926	290	5,497	803,946	4,250,734	9,219	108,187	813,455	4,364,418
2011	3,722	21,482	3,278	92,806	9,234,508	56,038,592	105,441	1,718,661	9,343,227	57,850,059
Jan	295	1,817	279	6,569	738,051	4,282,360	8,617	118,532	746,947	4,407,461
Feb	276	1,767	248	7,694	657,171	3,974,262	7,738	114,247	665,157	4,096,203
Mar	321	1,961	318	9,691	779,920	4,643,127	9,019	147,404	789,257	4,800,222
Apr	303	1,749	245	6,298	729,853	4,341,376	8,448	140,078	738,546	4,487,751
May	314	1,726	282	6,583	770,232	4,343,788	9,067	143,825	779,581	4,494,197
Jun	326	1,743	276	5,753	790,159	4,585,791	9,060	121,897	799,495	4,713,440
Jul	326	1,835	268	10,827	810,495	5,814,593	9,007	112,183	819,770	5,937,603
Aug	300	1,660	252	7,836	762,329	4,875,493	8,338	131,720	770,919	5,015,049
Sep	324	1,729	268	8,763	808,331	5,036,993	9,011	131,893	817,610	5,177,649
Oct	316	1,859	281	7,850	803,117	4,968,687	9,201	149,037	812,599	5,125,574
Nov	296	1,571	266	7,981	740,095	4,374,082	8,161	121,607	748,522	4,503,669
Dec	325	2,065	295	6,962	844,755	4,798,042	9,774	286,239	854,824	5,091,242
2012	3,615	22,574	3,023	96,895	9,358,339	54,427,920	103,913	1,510,522	9,465,275	56,035,337
Jan	296	1,879	246	5,913	752,358	4,507,089	8,584	150,136	761,188	4,663,139
Feb	284	1,736	218	4,540	707,223	4,133,806	7,944	132,831	715,385	4,271,177
Mar	312	1,796	263	4,914	796,549	4,722,663	8,655	115,225	805,467	4,842,803
Apr	277	1,740	216	5,116	704,884	4,143,675	7,426	135,301	712,526	4,284,092
May	306	1,803	242	5,920	814,474	4,609,994	8,997	127,410	823,713	4,743,324
Jun	300	1,934	247	6,028	810,820	4,634,340	9,390	124,276	820,457	4,764,643
Jul	300	1,977	282	7,380	826,373	4,996,248	9,256	144,137	835,911	5,147,766
Aug	297	1,859	265	25,655	794,517	4,512,888	8,743	117,700	803,525	4,656,243
Sep	298	1,858	245	4,772	765,483	4,456,358	8,676	122,703	774,404	4,583,833
Oct	316	2,038	262	6,434	794,147	4,602,633	8,606	124,078	803,015	4,733,146
Nov	303	1,939	290	14,160	798,904	4,546,383	8,997	113,851	808,191	4,674,394
Dec	325	2,016	247	6,063	792,607	4,561,843	8,639	102,874	801,493	4,670,780
2013	2,560	16,649	1,979	54,294	6,164,055	35,904,011	68,883	829,568	6,234,917	36,787,873
Jan	306	1,967	235	5,926	771,111	4,534,992	8,004	96,919	779,350	4,637,837
Feb	285	1,829	228	8,458	711,286	4,249,985	7,779	93,707	719,293	4,352,150
Mar	309	1,938	252	7,878	755,380	4,347,518	8,498	111,489	764,130	4,466,885
Apr	325	2,219	238	9,867	786,293	4,742,457	9,046	100,840	795,577	4,853,164
May	335	2,197	275	4,992	791,194	4,420,198	8,602	99,213	800,071	4,524,404
Jun	322	2,177	239	3,642	764,721	4,416,958	8,747	101,835	773,707	4,522,434
Jul	355	2,280	276	7,641	821,711	4,804,373	9,401	123,767	831,388	4,935,782
Aug	323	2,041	236	5,890	762,359	4,387,529	8,806	101,797	771,401	4,495,217
Sep										
Oct										
Nov										
Dec										

* Following BDL announcement no.877 dated 16 may 2012, banks clearing has been restrained to BDL main branch in Beirut.

6.1 FINANCING OF IMPORTS AND EXPORTS (in billions of Lebanese Pounds)

Period	Documentary L/Cs						Bills for Collection			
	Credits Opened		Credits Utilized		Outstanding Credits (end of period)		Inward Bills	Outward Bills	Outstanding Bills (end of period)	
	Imports	Exports	Imports	Exports	Imports	Exports	Imports	Exports	Imports	Exports
2012	9,719.2	6,400.0	9,121.6	5,692.0	1,786.0	2,171.9	2,900.1	2,417.1	235.5	713.2
Mar	874.8	515.9	747.5	503.7	1,475.3	1,830.7	210.0	206.5	248.7	685.1
Apr	779.0	605.0	728.8	507.5	1,518.1	1,905.4	236.1	175.1	263.4	672.8
May	708.3	382.7	770.5	412.6	1,435.9	1,818.6	227.4	209.4	233.8	676.5
Jun	762.7	612.5	714.3	291.2	1,500.0	2,144.6	466.7	174.4	255.2	697.5
Jul	816.5	573.4	788.9	502.3	1,518.4	2,155.6	229.0	191.7	265.5	675.6
Aug	1,104.1	380.0	753.3	694.9	1,819.6	1,820.1	192.3	166.0	253.3	678.0
Sep	990.0	421.1	1,021.7	349.7	1,783.2	1,878.6	183.8	173.5	231.8	656.2
Oct	681.9	404.6	922.3	339.1	1,505.9	1,924.3	200.8	171.3	231.4	660.4
Nov	730.0	583.5	679.1	407.6	1,542.9	2,075.4	193.4	197.3	238.6	671.4
Dec	991.8	818.1	742.6	677.6	1,786.0	2,171.9	322.9	168.0	235.5	713.2
2013										
Jan	971.8	542.9	943.3	610.3	1,798.5	2,085.3	187.8	247.8	238.4	683.0
Feb	837.7	453.7	1,081.3	587.7	1,535.2	1,831.4	166.5	196.6	228.2	675.1
Mar	996.1	623.2	651.5	298.5	1,865.1	2,225.2	198.5	223.0	228.4	673.8
Apr	870.6	525.2	918.7	488.4	1,750.9	2,246.8	218.4	158.0	241.7	685.2
May	892.6	540.5	868.6	622.0	1,770.5	2,133.7	246.2	177.9	233.0	640.4
Jun	912.0	484.6	817.6	476.6	1,856.8	2,121.1	223.2	167.3	227.9	627.0
Jul	754.7	289.6	955.9	396.4	1,611.6	2,005.0	211.6	165.5	228.5	605.8
Aug	752.0	271.4	868.4	289.0	1,461.2	1,900.8	191.3	131.5	226.4	669.9

6.2 OUTSTANDING LOCAL CURRENCY PUBLIC DEBT BY TYPE OF DEBT INSTRUMENT (1)
(end of period, in billions of L.L.)

	Dec 2011	Aug 2012	Dec 2012	May 2013	Jun 2013	Jul 2013	Aug 2013
Gross Local Currency debt	49,340.0	49,127.0	50,198.0	50,115.0	51,067.0	51,343.0	51,630.0
1. Long term bonds (2)	46,512.0	46,668.0	47,448.0	48,271.0	49,287.0	49,430.0	49,769.0
- over 24 months	41,793.0	41,445.0	42,499.0	44,274.0	45,599.0	45,948.0	46,353.0
- 24 months	3,972.0	4,378.0	4,208.0	3,288.0	2,938.0	2,665.0	2,509.0
- Coupon interest	747.0	845.0	741.0	709.0	750.0	817.0	907.0
2. Short term T Bills (2)	2,583.0	2,267.0	2,591.0	1,710.0	1,632.0	1,767.0	1,731.0
- 12 months	887.0	976.0	965.0	877.0	892.0	909.0	927.0
- 6 months	1,569.0	1,184.0	1,312.0	699.0	581.0	738.0	644.0
- 3 months	127.0	107.0	314.0	134.0	159.0	120.0	160.0
3. Loans	245.0	192.0	159.0	134.0	148.0	146.0	130.0

(1) Source : Ministry of Finance
(2) All TBs are reported including accrued interest.

7. EXCHANGE RATES OF MAJOR FOREIGN CURRENCIES

(in Lebanese Pounds)

Period	US Dollar	Euro	Swiss Franc	Pound Sterling	Japanese Yen (100)	Canadian Dollar	Silver (Ounce)	Gold (Ounce)
Period Average								
2012								
Aug	1,507.50	1,870	1,557	2,369	1,918	1,517	43,567	2,457,069
Dec	1,507.50	1,977	1,635	2,434	1,804	1,524	48,213	2,543,529
2013								
Apr	1,507.50	1,963	1,609	2,307	1,540	1,480	38,004	2,241,834
May	1,507.50	1,956	1,573	2,301	1,489	1,475	34,556	2,125,237
Jun	1,507.50	1,988	1,614	2,333	1,548	1,462	31,821	2,024,579
Jul	1,507.50	1,972	1,595	2,289	1,514	1,448	29,728	1,939,272
Aug	1,507.50	2,006	1,626	2,335	1,537	1,447	33,376	2,040,780
End of Period								
2012								
Aug	1,507.50	1,892	1,575	2,385	1,919	1,520	46,069	2,502,571
Dec	1,507.50	1,988	1,645	2,425	1,754	1,515	45,315	2,502,978
2013								
Apr	1,507.50	1,971	1,611	2,334	1,545	1,491	36,791	2,222,477
May	1,507.50	1,962	1,582	2,296	1,502	1,458	34,205	2,133,339
Jun	1,507.50	1,967	1,594	2,299	1,524	1,439	28,424	1,813,824
Jul	1,507.50	1,998	1,624	2,291	1,544	1,463	30,044	2,008,864
Aug	1,507.50	1,997	1,621	2,336	1,536	1,432	35,690	2,105,827

8. OUTSTANDING PUBLIC DEBT BY TYPE OF HOLDER (1)

(end of period)

	Dec 2011	Aug 2012	Dec 2012	Jun 2013	Jul 2013	Aug 2013
I. Gross Local Currency Debt (bns of L.L.)	49,340.0	49,127.0	50,198.0	51,067.0	51,343.0	51,630.0
1.1 Central Bank	16,374.0	15,470.0	15,049.0	16,348.0	16,378.0	16,630.0
Treasury Bills Portfolio (2)	16235.0	15,385.0	14,994.0	16,343.0	16,378.0	16,630.0
Loans to Public Entities	139.0	85.0	55.0	5.0		
1.2 Banks	25,177.0	25,429.0	27,267.0	25,797.0	25,886.0	25,951.0
Treasury Bills (4)	25,071.0	25,322.0	27,163.0	25,654.0	25,740.0	25,821.0
Loans to Public Entities	106.0	107.0	104.0	143.0	146.0	130.0
1.3 Non Banking System TBs (3)	7,789.0	8,228.0	7,882.0	8,922.0	9,079.0	9,049.0
II. Public Sector Deposits	10,984.0	11,873.0	12,916.0	13,739.0	13,709.0	13,212.0
III. Net Local Currency Debt	38,356.0	37,254.0	37,282.0	37,328.0	37,634.0	38,418.0
IV. Foreign Currency Debt (mns of USD)	20,927.0	23,126.0	24,385.0	26,140.0	26,174.0	26,243.0
V. Net Total Debt (bns of L.L.)	69,903.0	72,116.0	74,043.0	76,734.0	77,092.0	77,979.0

(1) Source : Ministry of Finance, quasi-final figures subject to revision.

(2) All TBs are reported including accrued interest.

(3) Since TBs' Market has expanded, it became hard to identify holdings of TBs by non-institutional non-resident, therefore all TBs in LL are considered as part of local currency debt, and those in USD as part of foreign currency debt.

(4) Starting September 1999, discounted public bills without recall, are included in these figures with TBs.

9.1 LISTED SHARES AT THE BEIRUT STOCK EXCHANGE

(August 2013)

Listed Shares	Traded Volume	% of Volume	Traded Value (\$)	% of Value	Closing Price (\$)	Average Price (\$)
Solidere "A"	199,656	17.57	2,238,934	16.65	11.01	11.21
Solidere "B"	115,059	10.12	1,284,271	9.55	10.62	11.16
Banque Libanaise pour le Commerce	0	0.00	0	0.00	1.95	-
Banque Libanaise pour le Commerce (Preferred Shares "A")	0	0.00	0	0.00	100.00	-
Banque Libanaise pour le Commerce (Preferred Shares "B")	0	0.00	0	0.00	101.00	-
Audi - Saradar Bank	47,514	4.18	292,368	2.17	6.25	6.15
Audi - Saradar Bank GDR	4,880	0.43	30,695	0.23	6.29	6.29
Audi Bank (Preferred Shares "E")	6,595	0.58	666,905	4.96	101.50	101.12
Audi Bank (Preferred Shares "F")	4,419	0.39	442,609	3.29	100.10	100.16
Audi Bank (Preferred Shares "G")	17,160	1.51	1,716,000	12.76	100.00	100.00
Audi Bank (Preferred Shares "H")	620	0.05	62,000	0.46	100.00	100.00
Bank of Beirut	4,320	0.38	81,880	0.61	19.00	18.95
Bank of Beirut (Preferred shares"E")	6,130	0.54	157,688	1.17	25.70	25.72
Bank of Beirut (Preferred shares"H")	2,313	0.20	59,213	0.44	25.60	25.60
Bank of Beirut (Preferred shares"I")	2,700	0.24	68,560	0.51	25.39	25.39
Byblos Bank	306,445	26.96	464,861	3.46	1.49	1.52
Byblos Bank GDR	1,400	0.12	100,800	0.75	72.00	72.00
Byblos Bank "Preferred Shares 2008"	4,313	0.38	431,325	3.21	100.00	100.01
Byblos Bank "Preferred Shares 2009"	8,487	0.75	849,426	6.32	100.00	100.09
BEMO	0	0.00	0	0.00	1.84	-
BEMO Bank "Preferred Shares"	7,900	0.70	797,900	5.93	101.00	101.00
BLOM GDR	172,839	15.21	1,469,132	10.93	8.50	8.50
BLOM	26,583	2.34	219,379	1.63	8.27	8.25
BLOM "Preferred Shares 2011"	194,182	17.09	1,967,572	14.63	10.15	10.13
RYMCO	0	0.00	0	0.00	3.50	-
HOLCIM Liban	3,046	0.27	44,468	0.33	15.68	14.60
Société de Ciments Blancs "B"	0	0.00	0	0.00	3.23	-
Société de Ciments Blancs "N"	0	0.00	0	0.00	3.24	-
Total	1,136,561	100	13,445,987	100	-	-

9.2 CERTIFICATES OF DEPOSIT

	Maturity	Closing July 2013		Closing August 2013	
		Price	Yield	Price	Yield
Banque de la Méditerranée (5 years)	14/12/2017	99.40	5.53%	99.44	5.52%
Banque du Liban (10 years)	25/04/2015	108.83	4.60%	108.88	4.33%

9.3 EUROBONDS

	Maturity	Closing July 2013			Closing August 2013		
		Price	Yield	Spread	Price	Yield	Spread
5 years (Euro Notes) BEMO Bank	30/06/2014	101.73	5.01	489	101.58	5.00	488

9.4 DIFFERENT FINANCIAL INSTRUMENTS

	Closing July 2013	Average Price	Closing August 2013	Average Price	Change (%)
GDR (Solidere)	11.00 - 11.10 \$	11.05	10.26 - 10.55 \$	10.41	-5.79
GDR (BLOM)	8.33 - 8.50 \$	8.41	8.32 - 8.70 \$	8.51	1.19
GDR (Audi - Saradar)	6.50 - 6.75 \$	6.63	6.20 - 6.50 \$	6.35	-4.22
GDR (Byblos)	72.00 - 75.00 \$	73.50	68.00 - 72.00 \$	70.00	-4.76



مصرف لبنان
BANQUE DU LIBAN